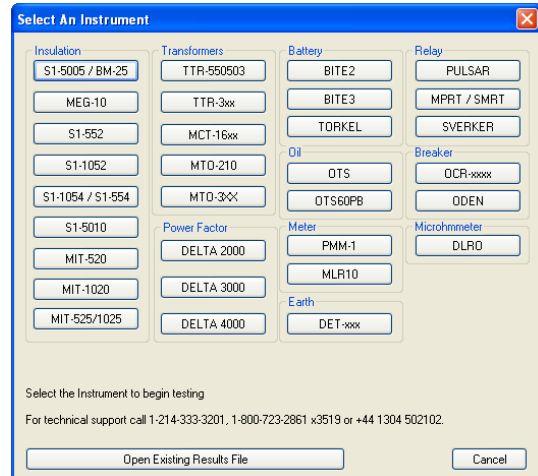


Interfacing MIT525, MIT1025 to PowerDB

Enable the latest driver for the MIT525, MIT1025 to be found via the internet or load the version supplied on the product CD if the PC being used has no access to the internet. The instrument does not need to be powered up to respond to the driver as it is powered via the USB cable.

Load PowerDB Lite software from the product CD, this may take several minutes. Run up PowerDB Lite software by clicking the PowerDB Lite icon on your desktop.

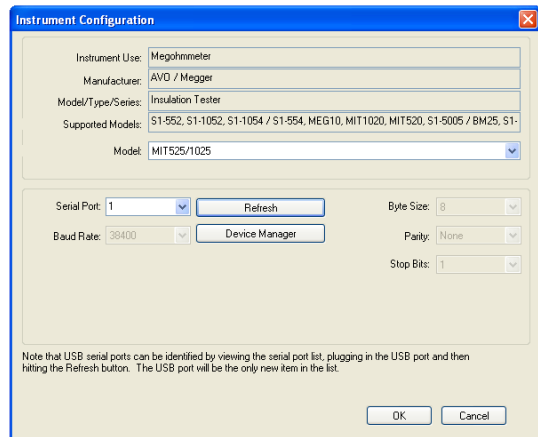
Select the **MIT-525/1025** soft button from the window entitled, **“Select An Instrument”** to get to the **Instrument Configuration** window.



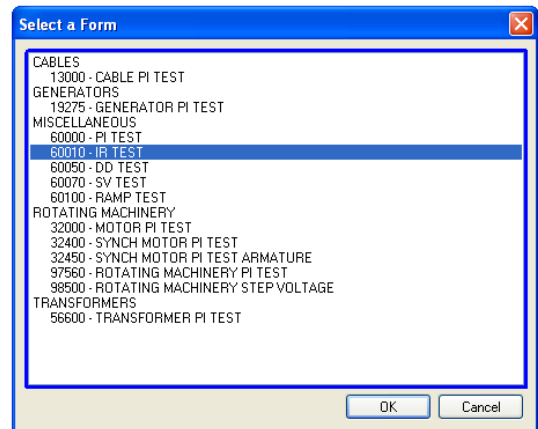
Click the **Device Manager** button and verify that a serial port has been allocated to the instrument:

- Expand the ‘Ports (COM & LPT)’ section by clicking the associated ‘+’ box in the Device Manager window. One serial port should be allocated to ‘Megger Device (COMxx)’ where xx is the port number.

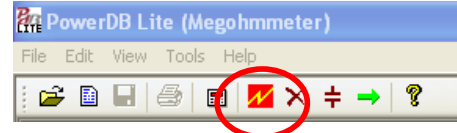
Ensure that port number xx is allocated correctly in the in PowerDB, Instrument Configuration window. Now click the OK to complete configuration.



Select the required test mode from the **Select a Form** window and click OK to continue.



After the form loads, click the 'zap' icon on the toolbar to initialise the instrument. An 'OK' confirmation appears at the top of the form if communications have been successful.



Scroll down until you see a table with cyan filled headers. RIGHT CLICK once on one of the cyan coloured areas to activate the **MIT 525/1025 Logger** application. The cyan filled cells represent phases.

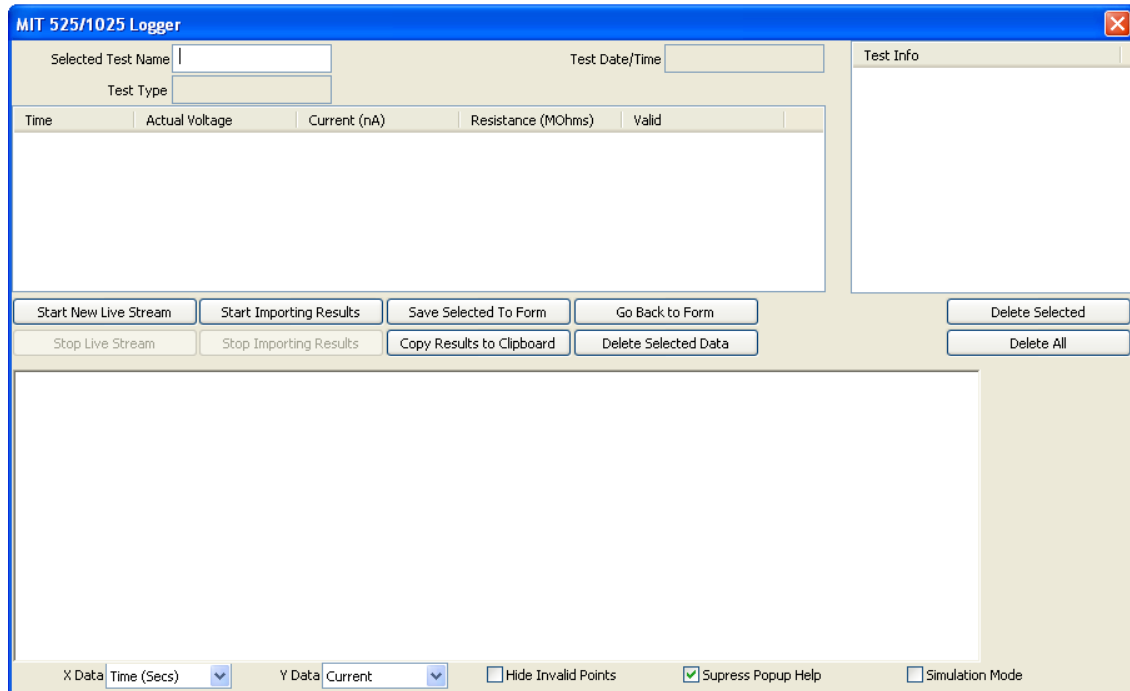
TEMPERATURE 20 °C TEMPERATURE CORRECTION FACTOR TO 20 °C, TCF 1.00 ← ENTER TCF

Display Every 0.1 Minutes or 0.1 % IR Change or 10 Delta uAmps

...SELECT DEVICE

A					B					C				
TIME (minutes)	Volts (kV)	READING (megohms)	TEMP CORR. (megohms)	CURRENT uA	TIME (minutes)	Volts (kV)	READING (megohms)	TEMP CORR. (megohms)	CURRENT uA	TIME (minutes)	Volts (kV)	READING (megohms)	TEMP CORR. (megohms)	CURRENT uA

The logging application captures results saved in the instrument using the **Start Importing Results** function, or captures live streaming data directly by activating the **Start New Live Streaming** function.



Other functions include:

- **Save Selected To Form** – save a selected test in top right hand menu to the form in the table. Typically three tables are available in the PowerDB form representing three phases named A, B and C. Tests from the Logger can be saved in any form by exiting the logger (**Go Back To Form**), right clicking the require phase in the form and selecting to **Save Selected To Form** from the logger
- **Copy Results to Clipboard** function facilitates a copy of all data to Excel and other popular software.